

## Fire Blankets

Excellent quality woven fibreglass silicon coated fire blanket with a kevlar hem. Tested and Kitemarked to BSEN1869. Supplied in a heavy duty plastic box with strong end cap fitting. Easy to install.

- FB1010JSP - 1m x 1m
- FB1212JSP - 1.2m x 1.2m
- FB1218JSP - 1.2m x 1.8m
- FB1818JSP - 1.8m x 1.8m



**Order before 3pm for next working day delivery**  
UK Mainland only - delivery to other locations may vary

# Fittings & Brackets

24

## CO2 'T' Bracket

Easily mountable mild steel, zinc plated heavy duty T bracket with plastic cradle. Available in 2 & 5kg.

BRAT2JSP - 2Kg  
BRAT5JSP - 5Kg



## Large Transport Bracket

Large, Heavy Duty transport bracket.  
For use with 3, 4, 6 & 9L / Kg  
Jewel Saffire Extinguishers.

TBRA3JSP - 3L / Kg  
TBRA4JSP - 4L / Kg  
TBRA6JSP - 6L / Kg  
TBRA9JSP - 9L / Kg

Can't find what you're looking  
for? Call our sales team on

**0845 330 5406**

**Order before 3pm for next day delivery**  
UK mainland only - Delivery times to other locations may vary



## CO2 Transport Bracket

Neat bracket with strap to hold most CO2 extinguishers during transport.

TBRA2KJSP - 2kg  
TBRA5KJSP - 5kg

## Heavy Duty Transport Bracket

Heavy duty transport bracket, flexible strap design allows the bracket to fit different types & sizes of extinguishers.

TBRAHDJSP



## Universal Transport Bracket

Neat, compact bracket with strapping system to allow easy access, also for most makes of extinguishers to fit comfortably. Very easy to install. Not designed to hold CO2 extinguishers.

TBRAUJSP



# Fittings & Brackets

26



## CO2 Lug Bracket

Most common and cost effective bracket for mounting 2 & 5kg Extinguishers

BRA2KJSP - 2kg Lug Bracket  
BRA5KJSP - 5kg Lug Bracket

## CO2 Anti-magnetic 'T' Bracket

Ideal for mounting CO2 Extinguishers in magnetically sensitive environments.

BRA2AMJSP - 2Kg Anti-magnetic T Bracket



## J Bracket

Common steel bracket for use with most extinguishers

BRAJJSP - Fire Extinguisher J Bracket



## Shoulder Bracket

Shoulder bracket, aimed at any extinguisher where the hook is on the shoulder (not the side) of the extinguisher.

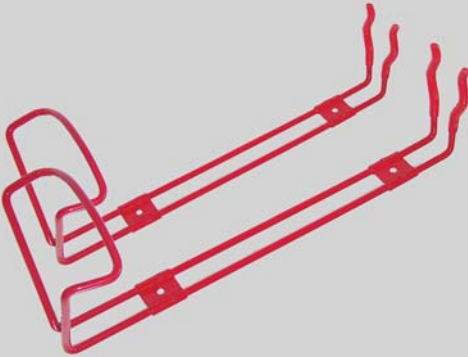
BRASJSP



## 1 & 2Kg / L Transport Brackets

Transport brackets for the Jewel Saffire 1 & 2Kg / L extinguishers.

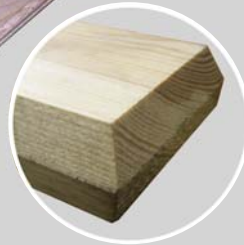
TBRA1JSP - 1Kg Powder / 1Ltr Foam  
TBRA2JSP - 2Kg Powder / 2Ltr Foam



## Mounting Backboard

Neat wooden back board for mounting extinguishers. Available in varnished, unvarnished and red.

MBBJSP - Unvarnished  
MBBVJSP - Varnished  
MBBRJSP - Red



Detail of  
Bevelled Edge

**Order before 3pm for next day delivery**  
UK mainland only - Delivery times to other locations may vary

# Safety Pins

28

## Jewel Saffire Safety Pin

Designed for use on all Jewel Saffire fire extinguishers.\*

**JPCP - 3.7mm Dia.**

\* Except CO2s



## Gloria / Allied Type Pin

Pin & OK Indicator for use with Gloria / Allied extinguishers. Only available in yellow.

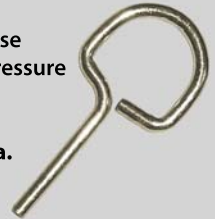
**GATPCP - 6mm Dia.**



## Gloria Type Pin

Steel safety pin for use with Gloria stored pressure extinguishers.

**GATPCP - 3.8mm Dia.**



## CO2 Pin & Ring

CO2 Pin & ring suitable for all CO2 extinguishers manufactured specifically to fit the Jewel Saffire range of CO2s.

**CPR02CP - 3.8mm Dia.**



## 3.75mm Safety Pin

Safety pin for old FPS & some Glover extinguishers.

SP375CP



## 3mm Safety Pin

Safety pin for use with the Britannia range of extinguishers.

SP3CP



## 2.75mm Safety Pin

Safety pin for use with the majority of fire extinguishers.

SP275CP



## 2mm Safety Pin

Small diameter steel pin for use with some of the Amerex & Pyrene ranges.

SP2CP



## Pin & OK Indicator

Plastic Pin & OK indicator - Should be replaced each year with service. Available in red, orange, green, yellow and blue.

SPOK\*CP



**Order before 3pm for next day delivery**  
UK mainland only - Delivery times to other locations may vary

# Jewel Saffire Tamperseals

30

## Jewel Saffire Tamperseals

The UK's best quality tamperseals. Using rubberised plastic to ensure the specific force break standard. Available in: red, green, blue, yellow & grey. Sold in 500s.

TS500\*JSP

\* Denotes colour



**Extra Flexible!**

[www.JewelSaffire.co.uk](http://www.JewelSaffire.co.uk)  
[Sales@JewelSaffire.co.uk](mailto:Sales@JewelSaffire.co.uk)  
0845 330 5406

## Dartseal

Plastic seal for pre-drilled safety pins.

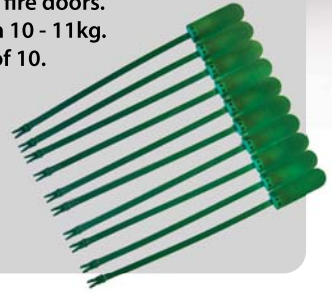
DSCP



## Fire Door Seals

Plastic seal for fire doors.  
Break strength 10 - 11kg.  
Sold in strips of 10.

FDSJSP



Full range of extinguisher  
spares available.

Call us today on 0845 330 5406

To discuss your requirements

## Pin End Caps

Plastic pin end cap to fit over most safety  
pins. Available in red, blue, green,  
yellow & orange.

PEC\*CP

\* Denotes colour



## Key Ring

Key ring for use with CO2 Pins.

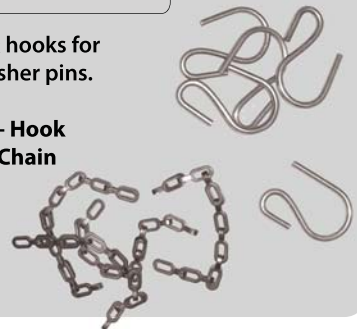
R3CP



## Hooks & Chains

Chains & hooks for  
extinguisher pins.

CCS1CP - Hook  
C12CP - Chain



**Order before 3pm for next day delivery**  
UK mainland only - Delivery times to other locations may vary